



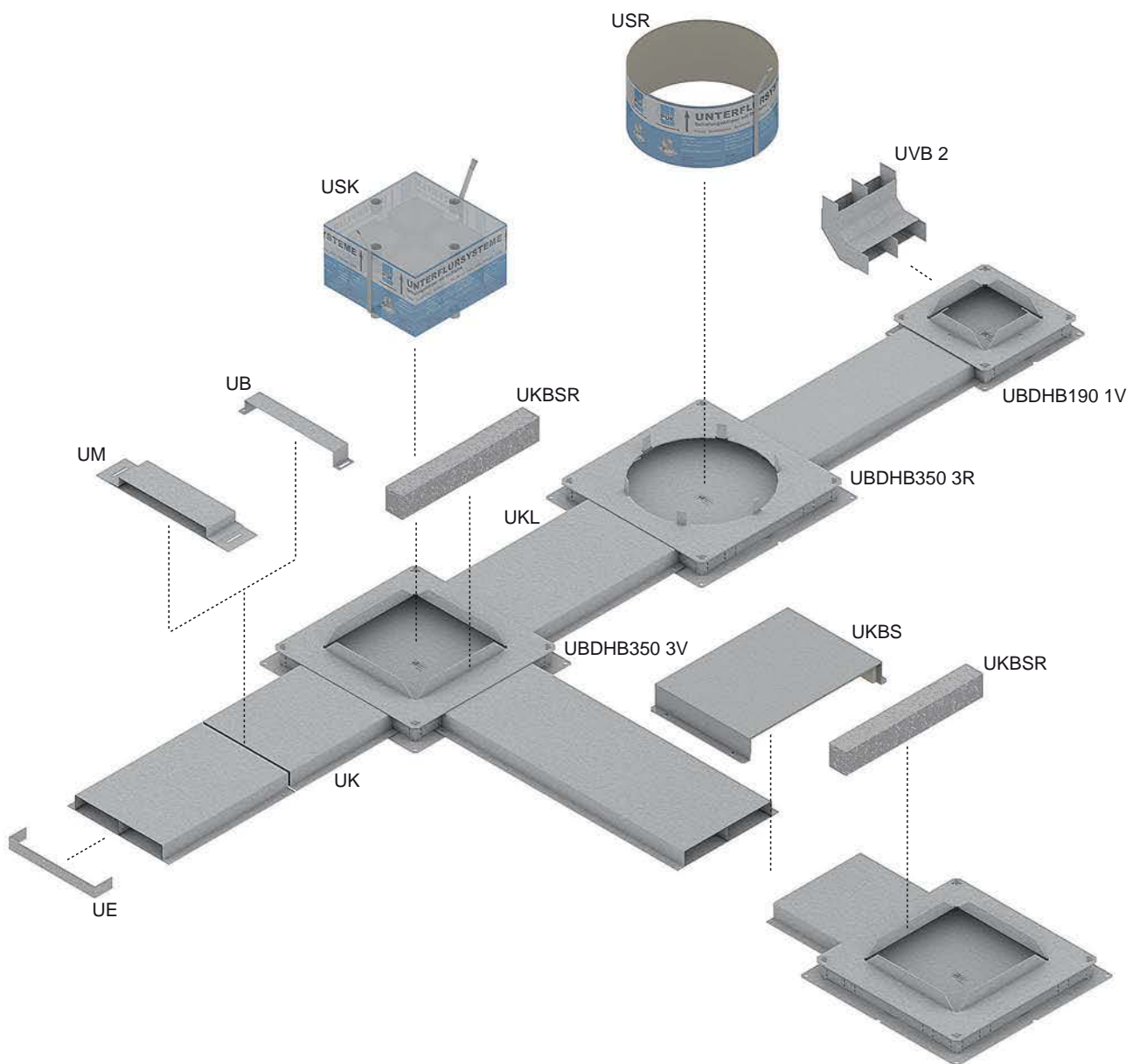
Hollow space floor box

Floor trunking systems



Floor trunking systems

Hollow space floor box



Hollow space floor box

Information

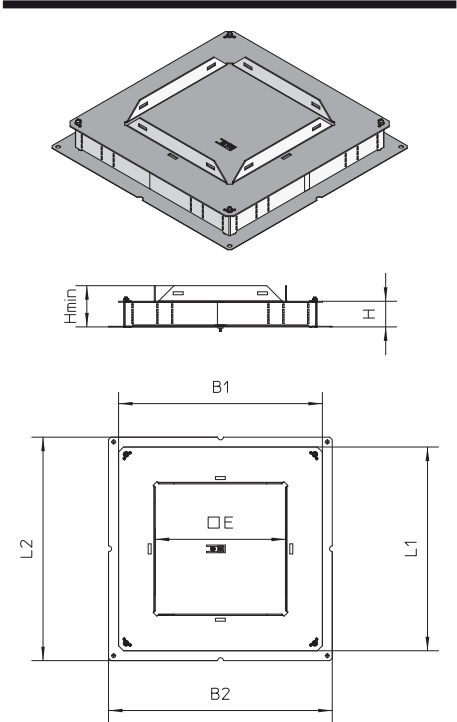
UBDHB350 3V hollow space floor box triple, quadrangular

Hollow space floor box with an installation opening of 261x261 mm for quadrangular installation units.

article number	H mm	H _{min} mm	B1 mm	B2 mm	L1 mm	L2 mm	E mm	G kg
S								
UBDHB350 28-259V	31	67	410	450	410	450	262 x 262	3,90
UBDHB350 38-259V	41	77	410	450	410	450	262 x 262	4,00
UBDHB350 48-259V	51	87	410	450	410	450	262 x 262	4,10

accessories included:
1 x **UBDHB-Z** grounding clamp

accessories optional:
USK shuttering unit quadrangular
UN nail plug



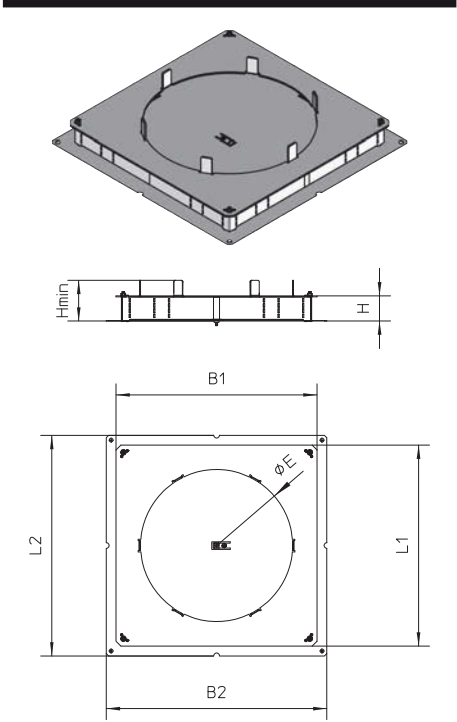
UBDHB350 3R hollow space floor box triple, round

Hollow space floor box with an installation opening of 307 mm for round installation units.

article number	H mm	H _{min} mm	B1 mm	B2 mm	L1 mm	L2 mm	E mm	G kg
S								
UBDHB350 28-308R	31	67	410	450	410	450	310	3,40
UBDHB350 38-308R	41	77	410	450	410	450	310	3,50
UBDHB350 48-308R	51	87	410	450	410	450	310	3,60

accessories included:
1 x **UBDHB-Z** grounding clamp

accessories optional:
USR shuttering tube
UN nail plug



Hollow space floor box

Information

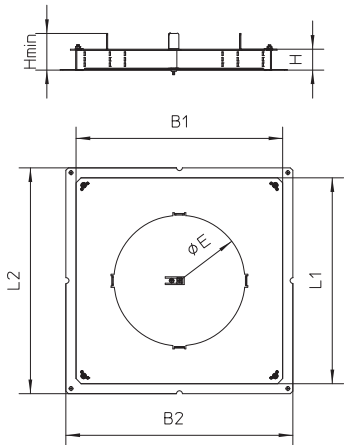
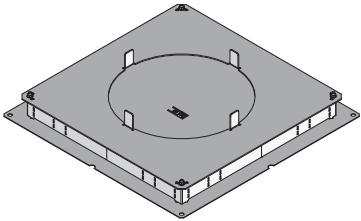
UBDHB350 2R hollow space floor box double, round

Hollow space floor box with an installation opening of 260 mm for round installation units.

article number	H mm	H _{min} mm	B1 mm	B2 mm	L1 mm	L2 mm	E mm	G kg
S								
UBDHB350 28-259R	31	63	410	450	410	450	260	3,80
UBDHB350 38-259R	41	73	410	450	410	450	260	3,90
UBDHB350 48-259R	51	83	410	450	410	450	260	4,00

accessories included:
1 x **UBDHB-Z** grounding clamp

accessories optional:
USR shuttering tube
UN nail plug



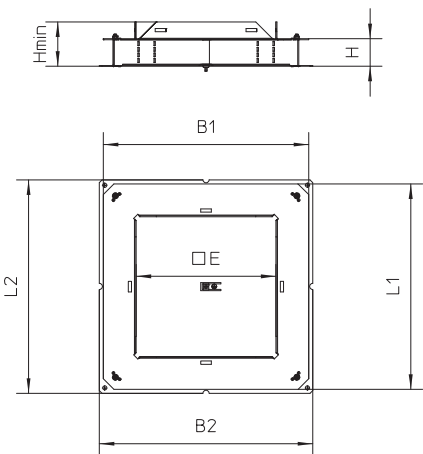
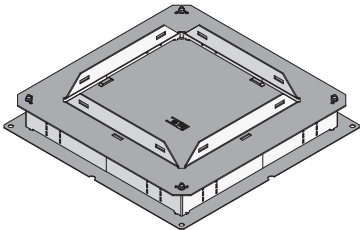
UBDHB250 3V hollow space floor box triple, quadrangular

Hollow space floor box with an installation opening of 261x261 mm for quadrangular installation units.

article number	H mm	H _{min} mm	B1 mm	B2 mm	L1 mm	L2 mm	E mm	G kg
S								
UBDHB250 28-259V	31	67	385	400	385	400	262 x 262	3,30
UBDHB250 38-259V	41	77	385	400	385	400	262 x 262	3,40
UBDHB250 48-259V	51	87	385	400	385	400	262 x 262	3,50

accessories included:
1 x **UBDHB-Z** grounding clamp

accessories optional:
USK shuttering unit quadrangular
UN nail plug



Hollow space floor box

Information

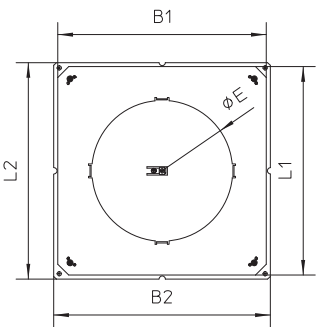
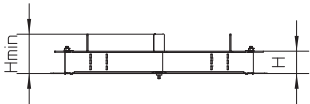
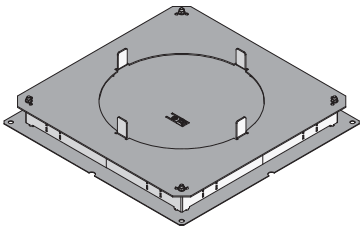
UBDHB250 2R hollow space floor box double, round

Hollow space floor box with an installation opening of 260 mm for round installation units.

article number	H mm	H _{min} mm	B1 mm	B2 mm	L1 mm	L2 mm	E mm	G kg
S								
UBDHB250 28-259R	31	67	385	400	385	400	260	3,10
UBDHB250 38-259R	41	77	385	400	385	400	260	3,20
UBDHB250 48-259R	51	87	385	400	385	400	260	3,30

accessories included:
1 x **UBDHB-Z** grounding clamp

accessories optional:
USR shuttering tube
UN nail plug



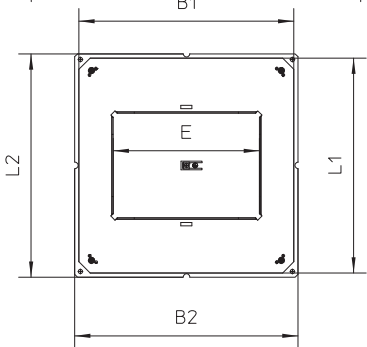
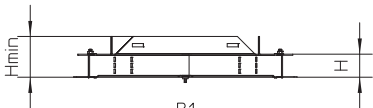
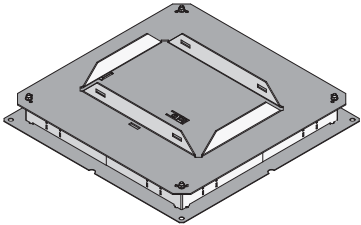
UBDHB250 2V hollow space floor box double, quadrangular

Hollow space floor box with an installation opening of 186x261mm for quadrangular installation units.

article number	H mm	H _{min} mm	B1 mm	B2 mm	L1 mm	L2 mm	E mm	G kg
S								
UBDHB250 28-185V	31	67	385	400	385	400	187 x 262	3,50
UBDHB250 38-185V	41	77	385	400	385	400	187 x 262	3,60
UBDHB250 48-185V	51	87	385	400	385	400	187 x 262	3,70

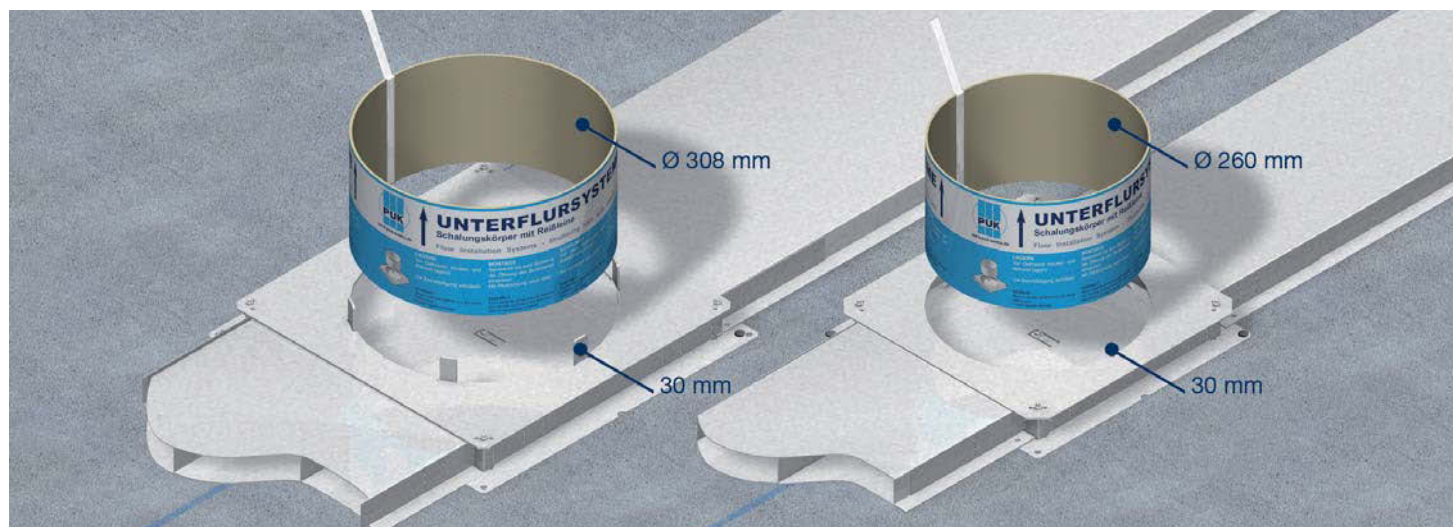
accessories included:
1 x **UBDHB-Z** grounding clamp

accessories optional:
USK shuttering unit quadrangular
UN nail plug

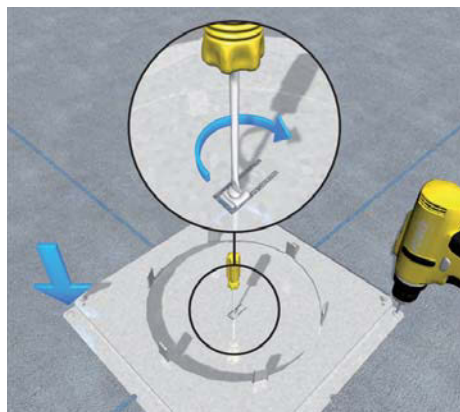


Hollow space floor box, round

Assembly instruction

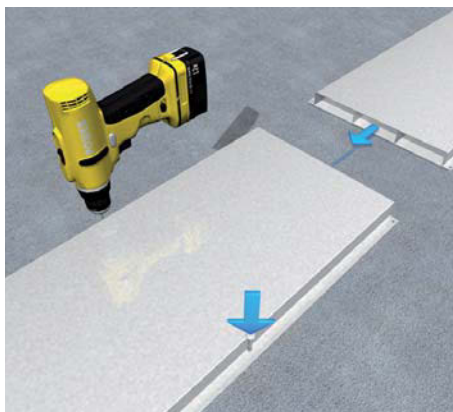


Hollow space floor box for round installation units Ø 305 mm or Ø 258 mm and underfloor ducts of up to 250 or 350 mm width with heights of 28/38/48 mm. Comply with minimum screed covering of 35 mm.



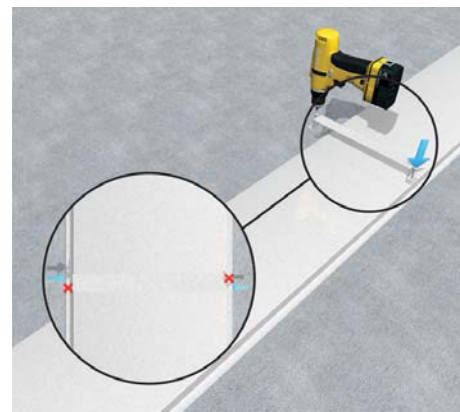
1 | Hollow space floor box

Align floor box dead centre to the duct course. Fasten on the slab ceiling and screw the earthing lug tight. Bend open side walls at the perforation. Set one floor box per change of direction in the duct system.



2 | Duct

Cut duct, lay up and align. Burr and galvanize cutting edges. Fasten with two nail plugs through the holes in the duct's side notch. Push duct to dead stop into the box.



3 | Clip

Align duct segments flush and push together. Use one clip per duct joint. Fasten overlapping with two nail plugs. Factor in potential equalization when inserting plugs.



4 | Inserting the shuttering pipe

Insert shuttering pipe straight from the top into the floor box opening. Floor box and shuttering pipe make one mounting unit. Mask all openings in the duct system. Apply insulation flush to duct system and to shuttering pipe.



5 | Screed work / Subsonic noise insulation

The shuttering pipe must be sprayed with formwork oil. The underfloor system must be insulated against subsonic noise. Mask the shuttering pipe with foil. Foil thickness must be < 2 mm. Apply screed neatly to the shuttering pipe.

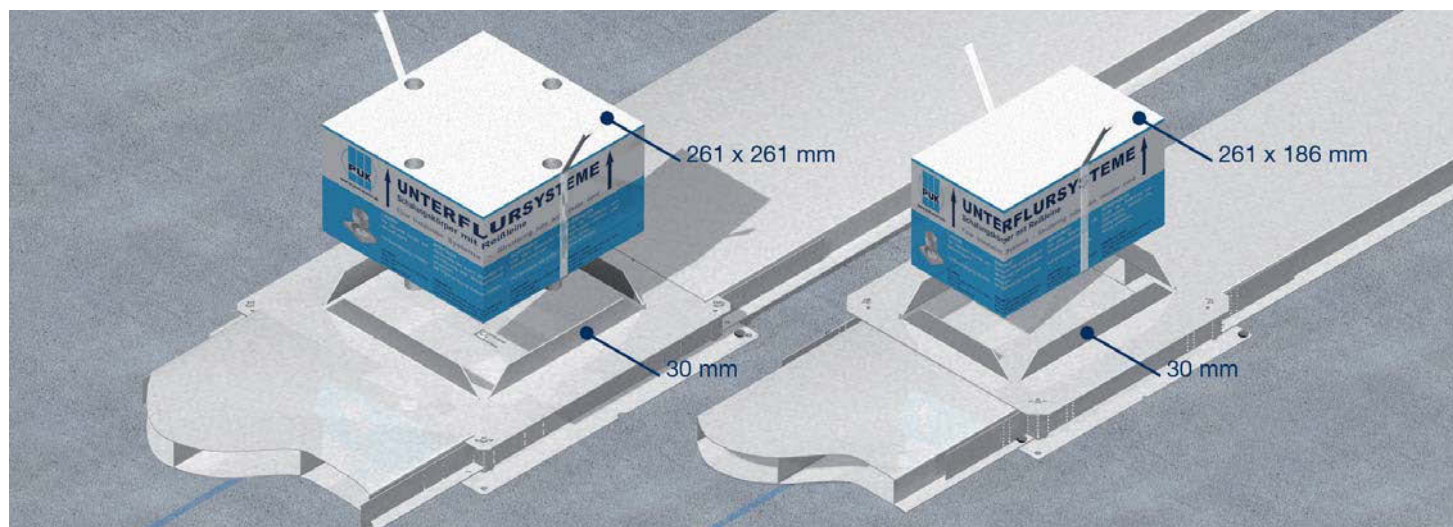


6 | Removal of shuttering pipe

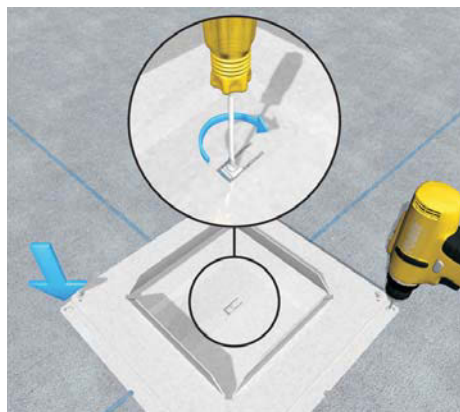
Remove shuttering pipe with the release cord from the hardened screed. Process floor cover to the cleaned assembly opening (Ø 260 mm, Ø 308 mm).

Hollow space floor box, quadrangular

Assembly instruction

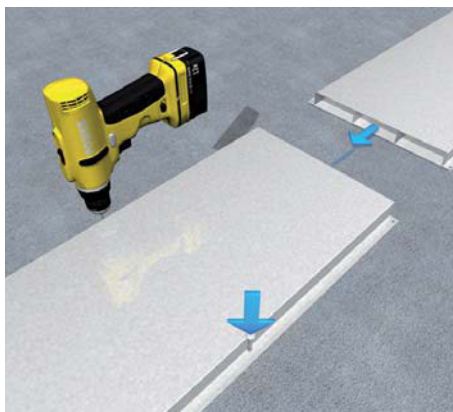


Hollow space floor box for quadrangular installation units 258 x 258 mm or 258 x 184 mm and underfloor ducts of up to 250 or 350 mm width with the heights 28/38/48 mm. Comply with minimum screed covering of 35 mm.



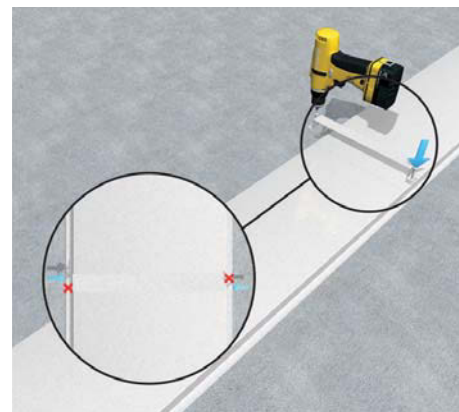
1 | Hollow space floor box

Align floor box dead centre to the duct course. Fasten on the raw ceiling and screw the earthing lug tight. Bend open side walls at the perforation. Set one floor box per change of direction into the duct system.



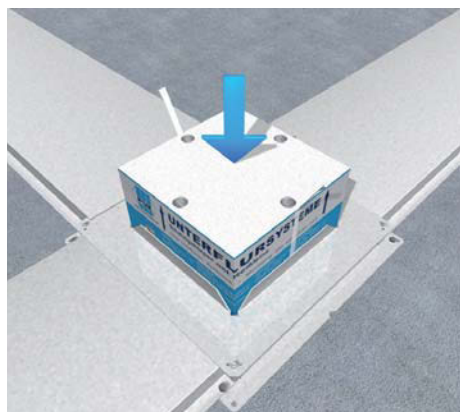
2 | Duct

Cut duct, lay up and align. Burr and galvanize cutting edges. Fasten with two nail plugs through the holes in the duct's side notch. Push duct to dead stop into the box.



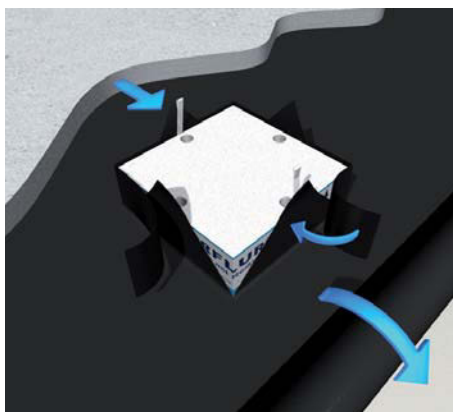
3 | Clip

Align duct segments flush and push together. Use one clip per duct joint. Fasten overlapping with two nail plugs. Factor in potential equalization when inserting plugs.



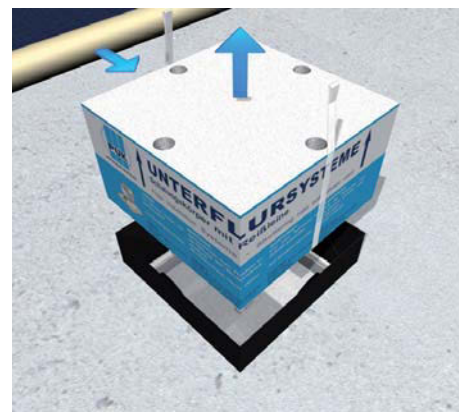
4 | Inserting the shuttering unit

Insert shuttering unit straight from the top into the floor box opening. Floor box and shuttering unit make one mounting unit. Mask all openings in the duct system. Apply insulation flush to duct system and to shuttering unit.



5 | Screed work / Subsonic noise insulation

The shuttering unit must be sprayed with formwork oil. The underfloor system must be insulated against subsonic noise. Mask the shuttering unit with foil. Foil thickness must be < 2 mm. Apply screed neatly to the shuttering unit.



6 | Removal of shuttering unit

Remove shuttering unit with the release cord from the hardened screed. Process floor cover to the cleaned installation opening (261 x 261 mm, 261 x 186 mm).



Errors and technical modification subject to change, reproduction as well as electronic duplication only with our written permission. With appearance of this print all preceding documents lose their validity

